



# Frost Incorporated

2020 Bristol, Grand Rapids, MI 49504

telephone: 616.453.7781 | fax: 616.453.2161 | [www.frostinc.com](http://www.frostinc.com) | [frost.sales@frostinc.com](mailto:frost.sales@frostinc.com)

# Better by Design



- Light
- Medium
- Heavy Duty Applications

FROST Inc. is the industry leader with conveyor replacement parts, and our roll bearings are no exception. Our bearings are the industry best: we have engineered a better product :

- A Longer Bearing Life
- Lower Noise levels
- Fully Sealed
- Greater Load Capacity
- Engineered for Higher Speeds.



# MEDIUM and HEAVY DUTY Specifications

Part Number	A Tread	B Flange Dia.	C Thru-Bore	D Tread Dia. Length	E Hex Bore Size	F Hub Extension	Basic B-10 Load Rating**	Retainer	Standard Shield/Seal Configuration
0959900	1.502 1.498	1.62	.68	.46	7/16"	.22	667 lbs	Nylon Retainer	Single Nylon Seals Both Sides
0988700	1.623 1.627	1.75	.68	.46	7/16"	.15	667 lbs	Nylon Retainer	Single Nylon Seals Both Sides
0973600	2.269 2.267	2.37	.94	.51	11/16"	.20	1,605 lbs	Steel Retainer	Single Nylon Seals Both Sides
0973200	2.298 2.302	2.37	.79	.51	11/16"	.20	1,605 lbs	Steel Retainer	Single Nylon Seals Both Sides
0983100	2.269 2.267	2.37	.94	.67	11/16"	.20	1,675 lbs	Steel Retainer	Single Nylon Seals Both Sides
* 0983110	2.269 2.267	2.37	.94	.67	11/16"	.20	1,675 lbs	Steel Retainer	Nylon Contact Seals Both Sides
0983200	2.269 2.267	2.37	.94	.67	11/16"	.20	1,675 lbs	Steel Retainer	Shield Only Both Sides
** 2126360	3.074 3.073		1.47	1.09	1-1/16"	.38	2,978 lbs	Steel Retainer	Sealed Both Sides
2126390	3.796 3.792	3.93	1.47	.91	1-1/16"	.56	2,978 lbs	Steel Retainer	Sealed Both Sides
2126530	2.4415 2.4395	2.656	.766	.566	1-1/16"	.20	2,168 lbs	Nylon Retainer	Buna-N (Nitrile Rubber) Both Sides

\* Relubrication provisions provided through inner race.

\*\* Based on 500 hours and 33 1/3 RPM.

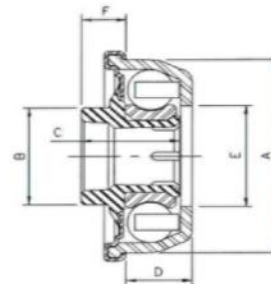


## LIGHT DUTY



### Frost Conveyor Roll Bearings

- ✓ Low cost.
- ✓ Low noise level.
- ✓ High speed capability.
- ✓ Static conductivity



Part Number	A Tread	B Flange Dia.	C Thru-Bore	D Tread Dia. Length	E Hex Bore Size	F Hub Extension	Basic B-10 Load Rating**	Bearing Syle	C.E.M.A Load Rating	Standard Shield/Seal Configuration
0999100	1.502 1.498	1.63	.656	.44	7/16"	.30	995 lbs	Nylon Retainer	122 lbs	Sealed
* 0999160	1.785	1.90	.656	.40	7/16"	.35	995 lbs	Nylon Retainer	122 lbs	Sealed

\* For straight press fit into 1.9" dia. x 16 ga tube.



**Frost Incorporated**

2020 Bristol, Grand Rapids, MI 49504

telephone: 616.453.7781 | fax: 616.453.2161 | www.frostinc.com | frost.sales@frostinc.com